



**Wagner College
Department of Music
Music Theory Placement Exercise**

On the following pages you will find a series of questions about notes, chords, and other aspects of music and music theory. By answering these questions, you will be demonstrating to us what you already know about the elements of music. We will use this information to help place you in an appropriate music course as you begin your study of music at Wagner.

This is not a test, but please answer the questions on your own. If you find a question that you can't answer within a couple of minutes, please move on to the next one. The entire exercise should take no longer than an hour and will be very helpful to us in placing you in the music course best suited to what you have already learned or studied.

Please print, fill out, and, if you are on campus, return the completed exercise to our office (Campus Hall, room 109). **During summer and holidays, or if you are off campus:** please scan or photograph your completed exercise and send it as an email attachment to dschulen@wagner.edu.

Thank you. We look forward to hearing from you!

WAGNER COLLEGE - MUSIC THEORY PLACEMENT EXERCISE

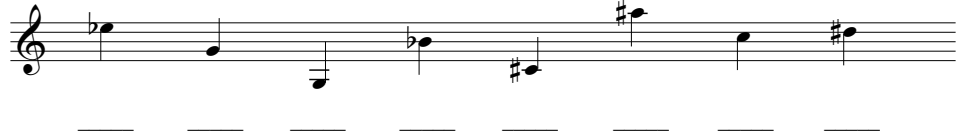
Name: _____

Date: _____

Email: _____

Phone: _____

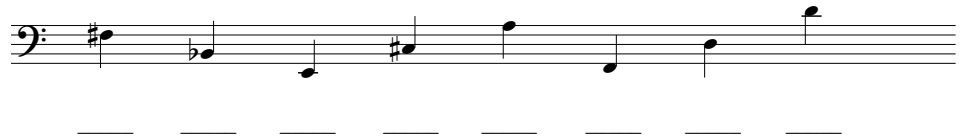
- 1) Identify each by letter name
(with accidental, if applicable).



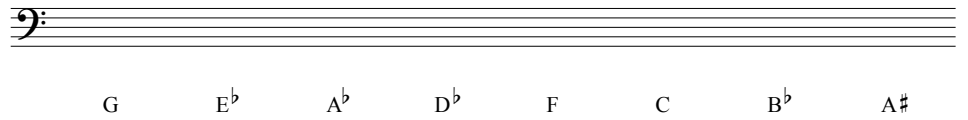
- 2) Write each as a quarter note.



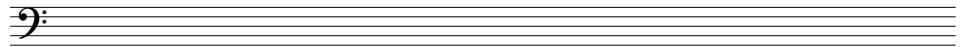
- 3) Identify each by letter name
(with accidental, if applicable).



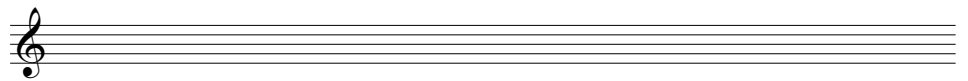
- 4) Write each as a quarter note.



- 5) Write a C major scale using quarter notes.



- 6) Write a G major scale using quarter notes.



- 7) Add one rest with the correct value
to complete each measure.



- 8) Provide the correct meter (time) signature.



Name: _____

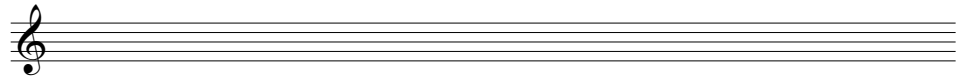
17) Identify each triad by type.



18) Identify each triad by type.



19) Write each major triad as indicated.

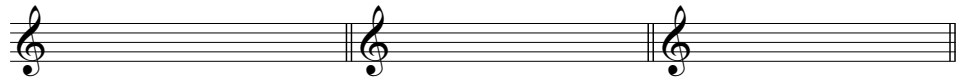


E A^b C D F

20) Identify each seventh chord by type.



21) Write chords as indicated.



C: V - I G: IV - V E^b: ii - V

22) Identify the key of each example.
(Key signatures have been removed.)

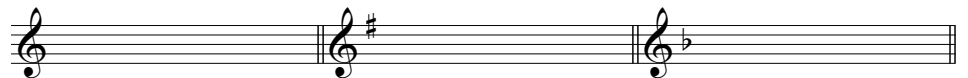


23) Provide roman numerals.



B^b: e: a:

24) Write each secondary (applied) dominant chord as indicated.



C: V⁷/V G: V⁷/IV F: V/vi